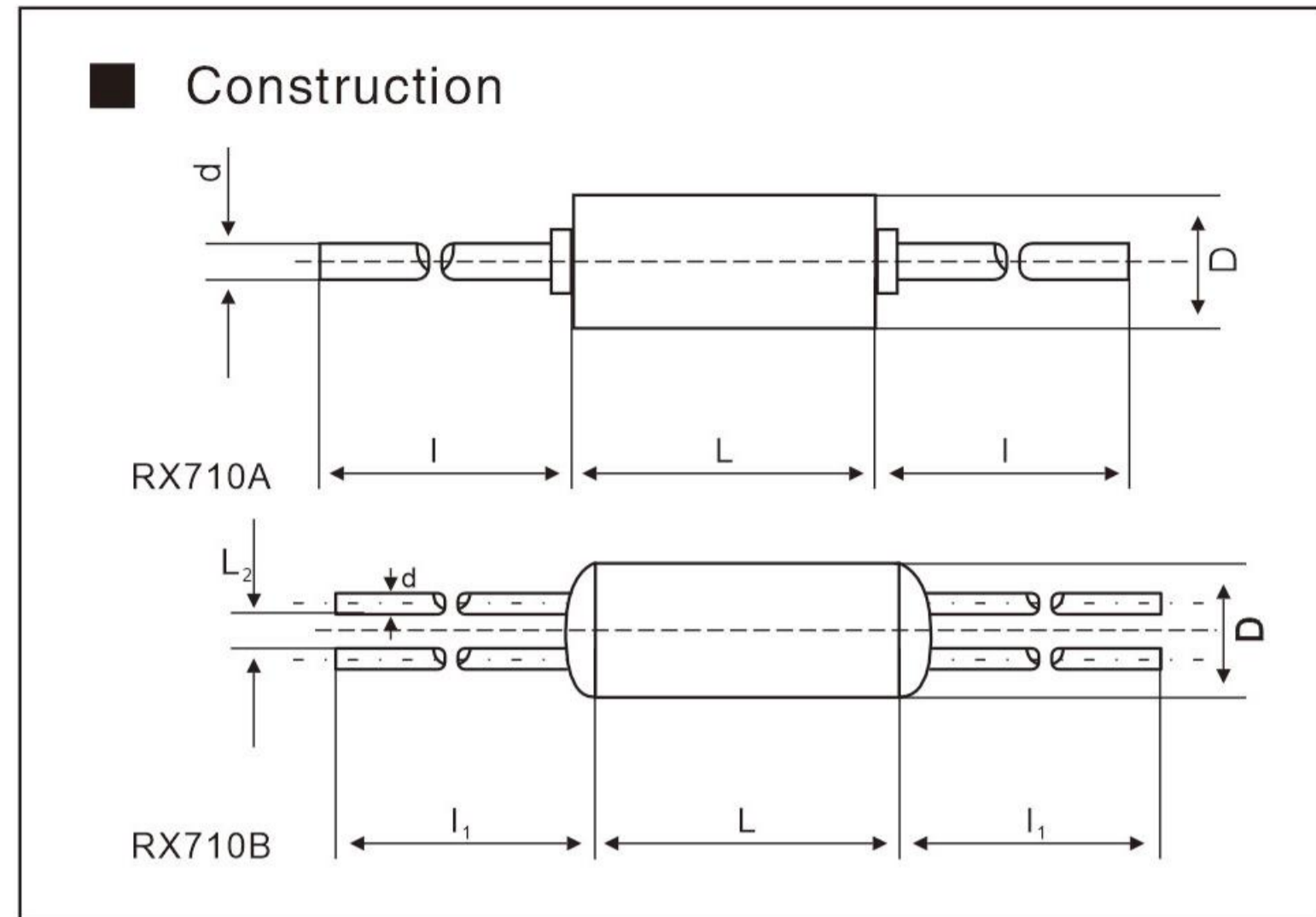
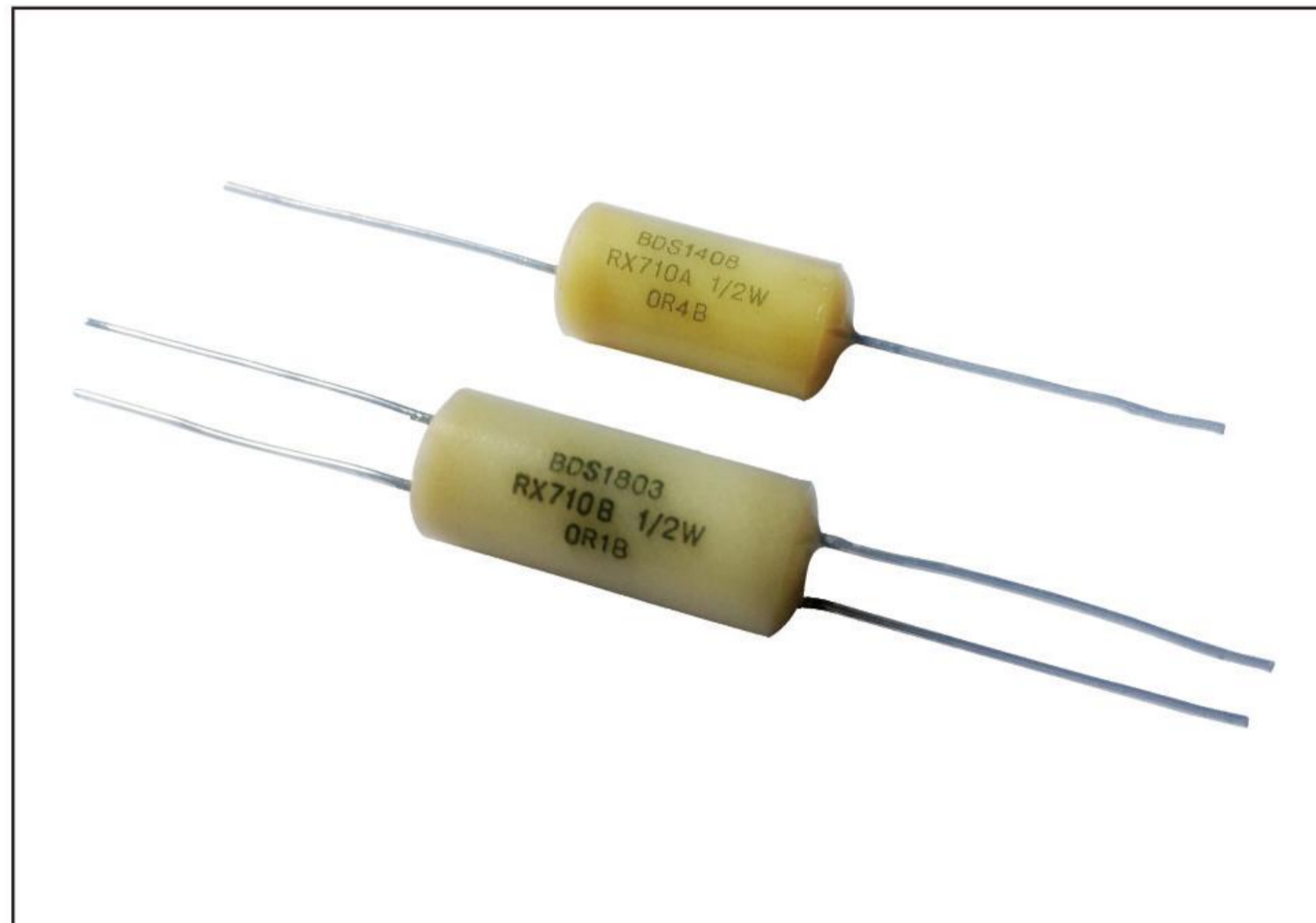


# Series RX710

## High precision Wirewound Resistors



### ■ Characteristics

- Excellent Properties of Insulation and Humidity-proof
- Excellent Stability and Reliability
- High current, High Precision and Low TCR

DIMENSIONS ( mm )						
Model	Power ( W )	$L \pm 0.5$	$D \pm 0.5$	$l_2 \pm 0.5$	$l_1 \pm 3$	$d \pm 0.05$
RX710-A	0.5	23	11.5	/	28	0.8
	0.75	27.5	12	/		
	1	27.5	14.5	/		
	2	37.5	17.5	/		
RX710-B	0.5	27.5	12	5	28	0.8
	0.75	27.5	12	5		
	1	27.5	15	7		
	2	37.5	17.5	9		

### ■ Technical Specifications

TYPE	RX710-A-0.5W RX710-B-0.5W	RX710-A-0.75W RX710-B-0.75W	RX710-A-1W RX710-B-1W	RX710-A-2W RX710-B-2W
Rated Power at 70°C(W)	0.5	0.75	1	2
Max Working Voltage(V)	2.2	2.7	3.2	4.5
Insulation Voltage(V)	700	700	1400	1400
Resistance Range( $\Omega$ )	0.01 ~ 10R	0.01 ~ 10R	0.01 ~ 10R	0.01 ~ 10R
Tolerance Range	L ( $\pm 0.01\%$ ), P ( $\pm 0.02\%$ ), W ( $\pm 0.05\%$ ), B ( $\pm 0.1\%$ ), C ( $\pm 0.25\%$ ), D ( $\pm 0.5\%$ ), F ( $\pm 1.0\%$ )			
TC-Range( $10^{-6}/K$ )	C6 ( $\pm 10$ ), C5 ( $\pm 15$ ), C4 ( $\pm 20$ ), C3 ( $\pm 25$ ), C2 ( $\pm 50$ )			

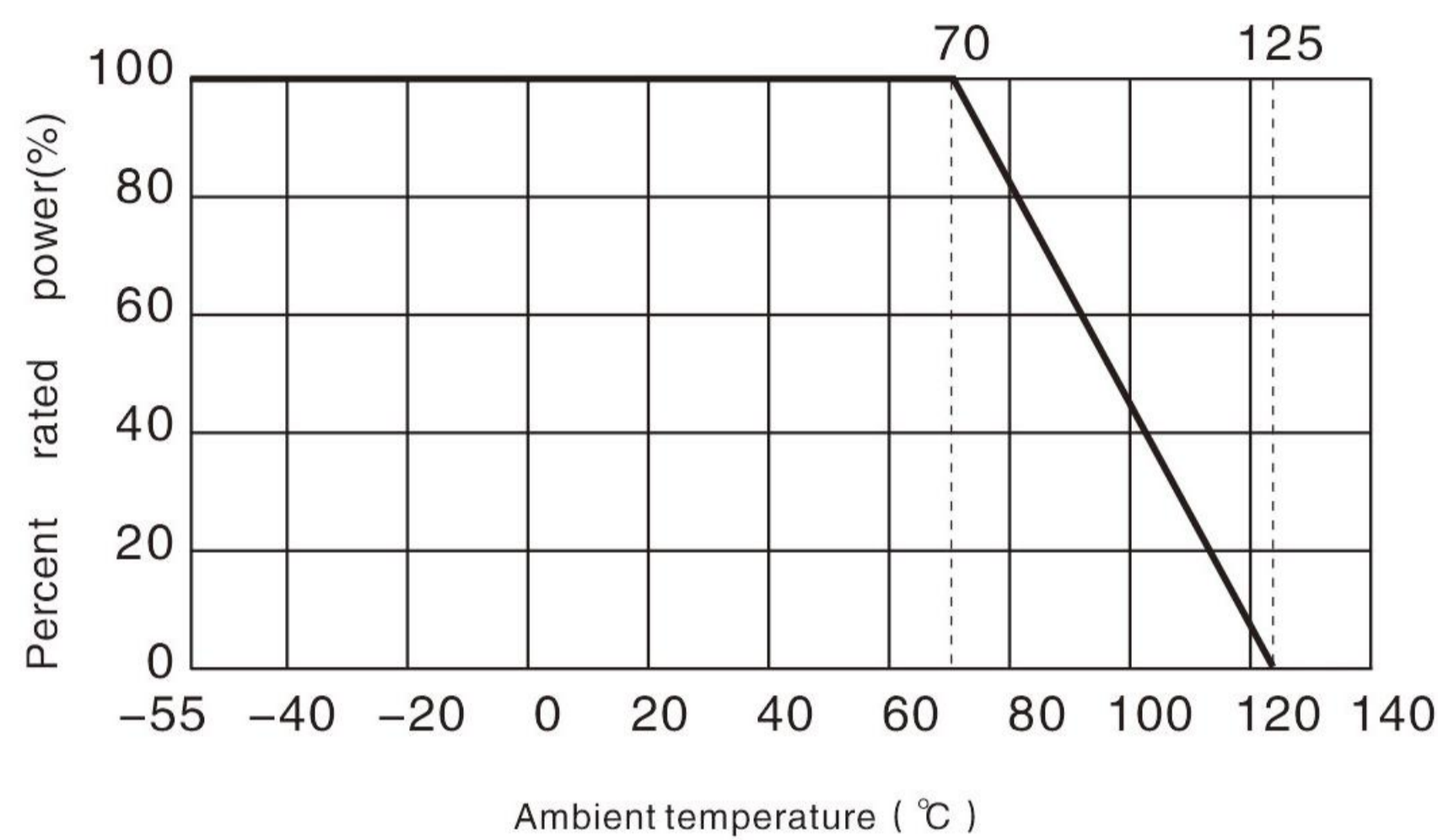
# Series RX710

## High precision Wirewound Resistors

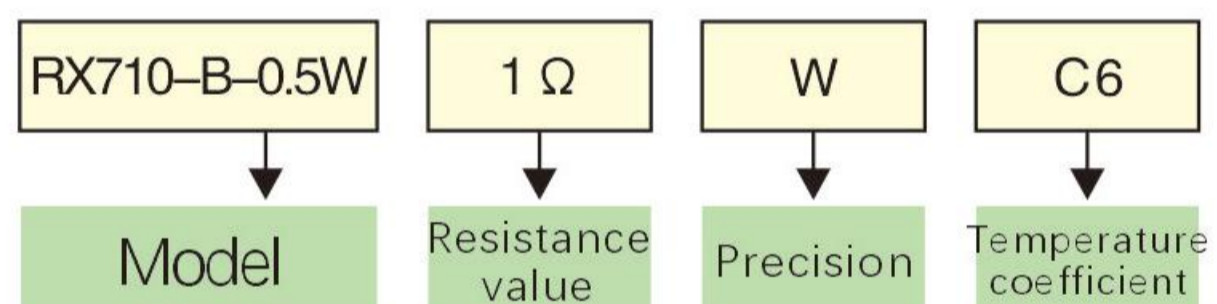


- Reference Standards  
GB/T5729-2003、GB5734-85

### Derating Curve



### Examples for purchase



### Packaging

Packaging: Bulk in plastic bags(MOQ:10pcs).